



DESIGNER

Haskell "Hank" Matheny
 Haskell Interiors Design
 Collection
 85 First St. N.E.
 Cleveland, TN 37311
 423-472-6409

SPECIAL FEATURES

Custom carved vanity
 and backsplash; glass
 tile panels

DIMENSIONS

13' x 15'

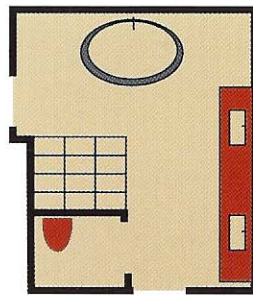
PRODUCTS USED

Tile: Colorado Gold Vein
 Marble; Westminster
 trim; Akdo Beach Beach
 glass
Cabinetry: Kerns
 Wilcheck custom vanity
Mirrors: Custom w/
 bevel
Sink(s): Toto
Tub: Bain Ultra Cella
 Air Tub
Toilet: Toto Promenade
Shower door: Custom
 enclosure with polished
 nickel handle
Vanity tops: Colorado
 Gold Vein parble
Lights: Haskell Interiors
 Design Collection
 private label
Plumbing supplies:
 Sigma faucets 2200
 series
Drawer pulls: Cliffside,
 satin nickel
Drapery: Thiabut
Wallcovering: Benjamin
 Moore metallic paint

Request for Retreat

WHEN THESE TENNESSEE HOMEOWNERS decided to remodel their master bath, they informed Haskell "Hank" Matheny, of Haskell Interiors Design Collection, that the goal was a quiet retreat filled with luxury. They also said they didn't want to see the job until it was move-in ready. A French toile fabric from the client inspired the look and material selection for the renovation. Matheny gutted the bath down to the studs and made two changes to open the once-cramped space. First, he switched the original shower and tub, making the tub the centerpiece and leaving the shower tucked into a corner. Secondly, he moved the toilet into a portion of the original closet to create a private water closet.

To give the space a clean, up-to-date feeling, Matheny selected white marble, blue and green glass tile, and blue metallic paint for the surfaces. All this provides a calm, elegant background to the fixtures and furnishings. Such highly reflective materials as polished nickel, crystal, mirrors, and mirrored furniture add spark without fussiness. Matheny balanced the cool, light materials with touches of browns in the custom wood vanity, custom upholstery, and burl wood picture frames. Monograms, a faux lynx fur rug, and a crystal chandelier add glamour to room. Finally the owner's favorite antique sepia drawings take center stage. «



PHOTOGRAPHER: STEPHEN GREENFIELD

